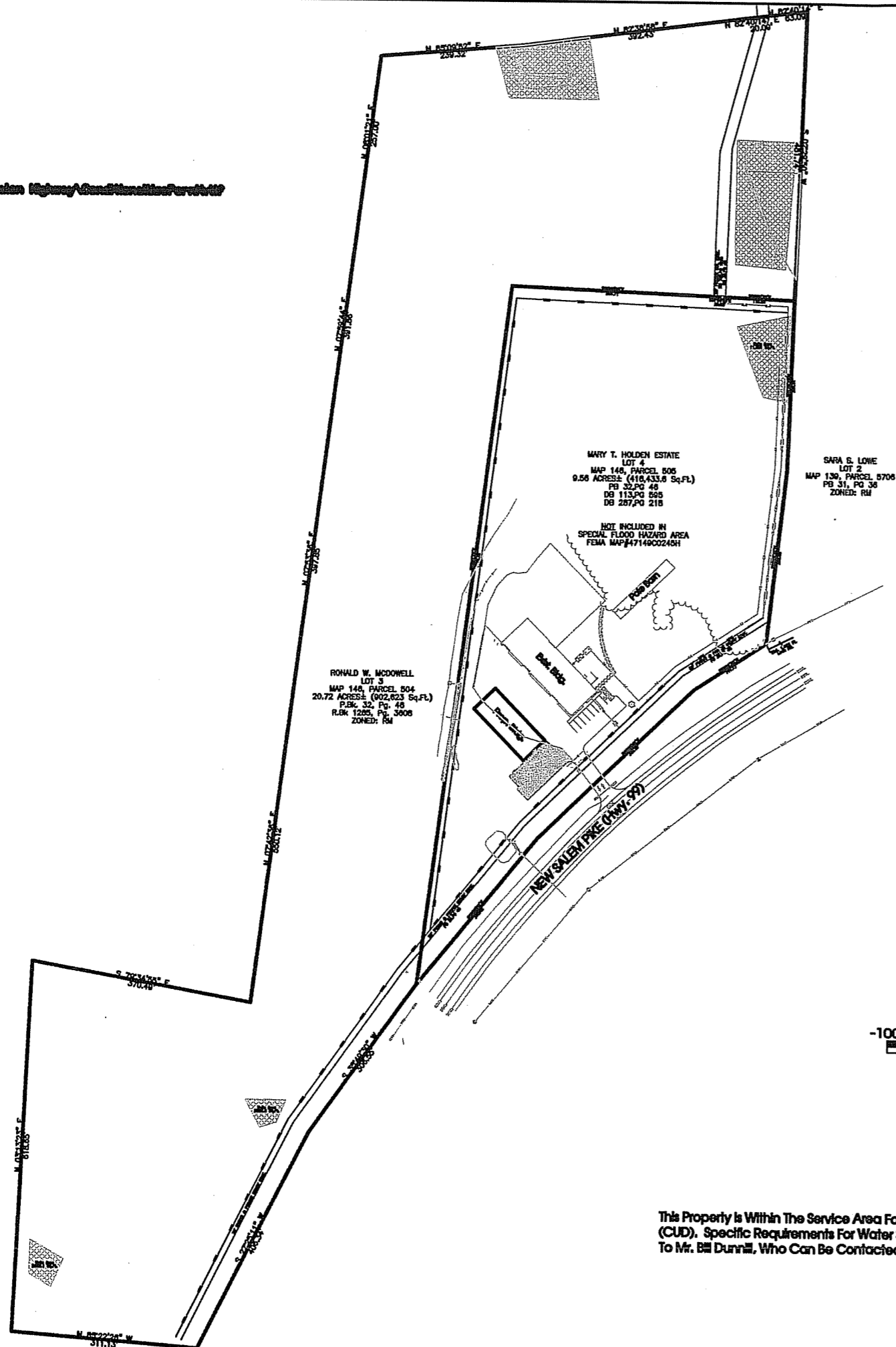


PARCEL 504 Salem Highway/Consolidated Utility District



This Property is Within The Service Area For Consolidated Utility District (CUD). Specific Requirements For Water Service Should Be Directed To Mr. Bill Dunn, Who Can Be Contacted At 615-893-7225.

Legend:

EXIST. CONCRETE MONUMENT	INLET FILTER PROTECTION
IRON PIN SET (I.P.S.)	HANDICAP PARKING SYMBOL
IRON PIN FOUND (I.P.F.)	HC SIGN
EXIST. SIGN POST	PROPOSED SIGN POST
EXIST. SEWER CLEANOUT	HEADWALL
EXIST. MANHOLE (SEWER & FLOOD)	WINGED HEADWALL
EXIST. CATCH BASIN (STORM SEWER)	MANHOLE
EXIST. WATER/GAS VALVE	PROPOSED SPOT ELEVATION
EXIST. TELEPHONE RISER	EXIST. SPOT ELEVATION
EXIST. GAS RISER	POST INDICATOR VALVE
ELECTRICAL ENCLOSURE	REDUCER
EXIST. WATER METER	REMOTE FIRE DEPT. CONNECTION
EXIST. UTILITY POLE	REVISION NUMBER
EXIST. FIRE HYDRANT	RIP RMP
BENCHMARK	RUNOFF FLOW ARROW
BLOW OFF VALVE	SEWER/STORM FLOW DIRECTION
CONCRETE BOLLARD	TRAFFIC ARROW
CATCH BASIN	TURN LANE ARROWS
CURB INLET	WAN ACCESSIBLE HANDICAP DESIGNATION
AREA DRAWN	WHEEL STOP
CONCRETE THRUST BLOCK	GREASE TRAP
DOUBLE DETECTOR CHECK VALVE	DRAINAGE STRUCTURE DESIGNATION
FIRE DEPT. CONNECTION	DRAINAGE PIPE DESIGNATION
FIRE HYDRANT	CONCRETE SIDEWALK
GAS METER	EXTRUDED CURB
GATE VALVE & BOX	CURB & CUTTER
EXTERIOR CLEANOUT	CONCRETE SHALE
WATER METER	TYPE-X HEADWALL

EXISTING PHONE	
EXISTING ELECTRIC	
PROPERTY LINE	
ENCUMBRANCES	
RIGHT OF WAY	
EROSION CONTROL SILT FENCE	
EXISTING TREELINE	
EXISTING FENCELINE	
MINIMUM BUILDING SETBACK LINE	
PHASE BOUNDARY	
EXISTING GAS LINE	
PROPOSED GAS LINE	
EXISTING STORM	
PROPOSED STORM	
EXISTING CONTOUR LINES	601
PROPOSED CONTOUR LINES	601
EXISTING SANITARY SEWER	
PROPOSED SANITARY SEWER	
EXISTING WATER	
PROPOSED WATER	

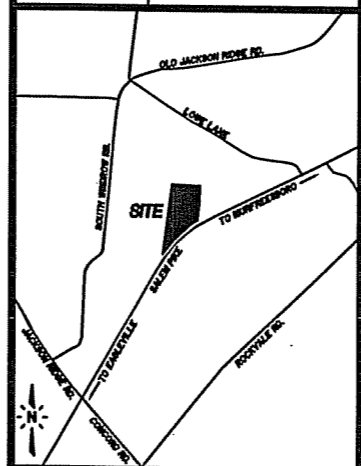
Notes:

Electrical Service:
Middle Tennessee Electric Membership Corporation (MTEMC) will provide electric service to the subject property according to the normal operating practices of MTEMC as defined in the rules and regulations, bylaws, policy bulletins and operational bulletins of MTEMC, and in accordance with the plot approval checklist, tree planting guidelines and other regulations contained on the MTEMC website at www.mtemc.com (collectively the "Requirements"). No electric service will be provided until MTEMC's Requirements have been met and approved in writing by an authorized representative of MTEMC. Any approval is, at all times, contingent upon continuing compliance with MTEMC's Requirements.

Date: _____ M.T.E.M.C. Official: _____

Utility Service:
I hereby certify that the existing utilities shown hereon are located as shown.

Date: _____ C.U.D. Official: _____



Owner/Developer:
Bill McDowell
10148 Hwy. 99
Rockvale, TN 37153

Deed Reference:
Deed Book 1035, Page 3235,
Tax Map 146, Parcel 5.05
Plat Book 32, Page 46
Lot 4

Yard Requirements:
Front: 40'
Side: 15'
Rear: 20'

Land Use Data:
Area Lot 4 = 9.56± Acres
Zoning: Commercial Services
Building Size (Proposed):
Net Sq. Ft. = 6,00 Sq. Ft.

Parking Requirements:
Required: 3 Employees = 3 Spaces
1200 SF/Office = 4 Spaces
Total = 7 Spaces

Provided:
7 Reg. Spaces + 1 H.C. = 8 Spaces

Flood Map:
No Portion Of This Property Lies In The 100 Year Flood Plain As Determined, From Elevations Shown On F.E.M.A. Firm Maps For Rutherford County, Map No. 47149C0245H, Effective Date January 5, 2007

Building Height: <35'

Intended Use:
Office
General Service & Repair Shop
Inventory Storage for materials
Cleaning Bay (Self contained booth)

SEC, Inc.
SITE ENGINEERING CONSULTANTS
ENGINEERING - SURVEYING - LAND PLANNING
860 MIDDLE TENNESSEE ROUTE 190
PRIDGES (615) 890-7201
P.O. MAIL: JAMES BASCOM WALKER (615) 893-2657
NO PORTION OF THIS DRAWING MAY BE REPRODUCED WITHOUT THE EXPRESSED WRITTEN CONSENT OF SEC, INC.

The site or items on these construction drawings is intended to enhance specific engineering design efforts and objectives. It is not intended to be a substitute for the professional judgment of the engineer or architect. The user of these drawings shall be responsible for the accuracy of the information and data provided and for the results of any construction in accordance with the construction plans.

Triton Construction
Phase 2
Rutherford County, Tennessee

Master Plan

REVISION: 3-21-14 PG COMMENTS

DRAWN: SJA
DATE: 1-14-14
CHECKED:
IFR
FILE NAME:
10186project2.dwg
SCALE:
1"=100'
JOB NO.
10186
SHEET:

1 of 5